



Richard Hansen, Chair
Pat Cici Jr., Vice-Chair
Greg Lammers, Commissioner
Vacant, Commissioner
David Thomas, Commissioner

WATER COMMISSION

6:00 PM

Thursday, January 22, 2026, 6:00 PM
City Hall Council Chamber
116 E. Foothill Boulevard, Glendora

AGENDA

CALL TO ORDER

ROLL CALL

PLEDGE OF ALLEGIANCE

REORDERING OF AND ADDITIONS TO THE AGENDA

PUBLIC COMMENT

The City of Glendora encourages community participation at its public meetings. Speakers are limited to three minutes, and time may not be shared or transferred. A total of 30 minutes is reserved for public comment, which may be extended by majority vote of the legislative body. At regular meetings, comments may address both agenda and non-agenda items during the Public Comment portion, with additional opportunities to speak provided during Public Hearings. At special meetings, public comment is limited to agenda items. Residents may participate in person or submit comments by email, phone, mail, or other available methods. Participation options may be adjusted if a State of Emergency, Health Order, or Executive Order limits in-person attendance. For more information, see the Guide to Public Meetings and Participating in Public Meetings on the City's website at www.cityofglendora.gov/citymeetings.

1. Public Comments received

MEMBER STATEMENTS/REPORTS

DIRECTOR/STAFF LIAISON AND ATTORNEY STATEMENTS

UNFINISHED BUSINESS

2. Water Distribution Update Second Quarter 25/26

Recommended Action for the Water Commission:

- 1. Receive and file the FY 25/26 Water Distribution Update (2nd Quarter).

3. Water Conservation Program Update

Recommended Action for the Water Commission:

- 1. Receive and file the Water Conservation Program Update.

4. Water Supply Outlook

Recommended Action for the Water Commission:

- 1. Receive and file the Water Supply Outlook.

NEW BUSINESS

5. Water Division Operations Update

Recommended Action for the Water Commission:

- 1. Receive and file the Water Division Operations Update.

MEMBER/STAFF CLOSING COMMENTS

ADJOURNMENT

Date Posted: January 15, 2026 04:58 pm



STAFF REPORT

TO: Chair and Commissioners

DATE: January 22, 2026

FROM: Public Works

DISTRICT(S): Citywide

SUBJECT: Water Distribution Update Second Quarter 25/26

RECOMMENDATION

That the Water Commission:

1. Receive and file the FY 25/26 Water Distribution Update (2nd Quarter).

STRATEGIC FOCUS AREAS

Not Applicable

EXECUTIVE SUMMARY

- Emergency vs non-emergency definitions revised and revamped. Including priority planning and definitions.
- Distribution leak history comparison and summary 2023- 2025
- Summary of Notable Water Division Work and Projects FY 25/26

LEGISLATIVE HISTORY / PREVIOUS ACTIONS

Not Applicable

DISCUSSION

The Water Division has been reviewing and updating how we track, and report work types. This report includes an updated table that defines work categories and explains how each will be tracked going forward. The goal of this revision is to provide clearer, more consistent information for the Commission and other stakeholders when reviewing the data.

Revised Definitions: Emergency vs. Non-Emergency Work

The definitions are based on AWWA standards, which are widely used in the water industry. We are establishing a uniform coding system and operational plan to implement these definitions and prioritization within our GIS and reporting forms in early 2026.

Emergency vs. Non-Emergency Leaks:

- Emergency Leak: Requires immediate action at any time to protect public safety, prevent significant property damage, or prevent system failure. Examples include:
 - Large main breaks flooding streets and endangering traffic or property
 - Water entering buildings

- Fire hydrants out of service when needed for fire response
- After-Hours Leak: Leaks that occur outside regular working hours. Urgent response is required only if the leak meets emergency criteria.
- Regular Leak (Non-Emergency): Leaks that do not pose an immediate risk to public safety, critical infrastructure, or service delivery. Repairs can be scheduled during normal operations. Examples include:
 - Small service line leaks causing minor wet areas in roadways or public easements
 - Slow leaks from meter pits without property damage

Emergency vs. After-Hours

Criteria	After-Hours Response	Emergency Leak Repair
Timing	Outside of business hours	Any time (priority-based)
Purpose	Inspection, isolation, temporary mitigation	Full, immediate repair
Urgency	Low to moderate	High
Example Leak	Dripping meter, small service leak, slow hydrant leak	Burst main, hydrant knock-over, flooding
System Impact	None or minimal	Pressure loss, service outage
Crew Deployment	One person or small team	Full crew, equipment, standby contractors (if needed)

Below is the proposed definitions, guidelines and priority list for leaks. We are still in review and will finalize early in 2026.

Priority Categories for Leak Assessment

High priority leaks require immediate action because they may cause damage to property, infrastructure, or public safety. These leaks typically have a flow rate between 25 and 500 GPM. Examples include large streams from mains or hydrants that flood streets, cause erosion, or allow water to enter buildings. Field crews should repair these leaks immediately, isolate the affected area, provide traffic control, and notify relevant parties.

Medium priority leaks are continuous but contained and cause only minor property or operational issues. Their flow rate is usually between 5 and 25 GPM. Examples include small puddles along easements or damp soil around valves or service lines. These leaks should be scheduled for repair within 24 hours or by the next business day, and monitored in case they worsen.

Low priority leaks pose little or no risk to infrastructure, safety, or customer service and generally have a flow rate of less than 5 GPM. Examples include slow drips in meter pits, minor wet patches in roads or parkways, or small seepage from valve boxes. These leaks can be repaired during routine maintenance, with monitoring to ensure they do not get worse.

Leak Priority Classification

Priority	Definition	Indicators	Example
----------	------------	------------	---------

High	Requires immediate action (within hours).	<ul style="list-style-type: none"> • Visible water flowing into streets or structures • Large puddles, erosion, or property damage • Impacts multiple customers 	Water Main break causing flooding
Medium	Requires repair within days, may affect service or efficiency but no immediate danger.	<ul style="list-style-type: none"> • Wet ground near service line or valve • Continuous dripping or small pool formation • Minor erosion, no structural damage 	Small service line leak in easement
Low	Monitor and schedule repair during routine maintenance.	<ul style="list-style-type: none"> • Moisture observed but no pooling • Minor leaks at fittings or meters • No property damage or safety impact 	Drop from meter pit, minor valve seep

Distribution Three Year Leak History Comparison Summary- 2nd Quarter

Water main, service, and hydrant leaks combined by month/year from October through December:

Second Quarter	2025	2024	2023
<i>October</i>	27	36	26
<i>November</i>	24	24	25
<i>December</i>	26	20	31
Total Leaks	77	80	82

Total leaks comparison over the last three years, by leak type, from October through December:

Second Quarter	2025	2024	2023
<i>Main Leaks</i>	56	61	56
<i>Service Leaks</i>	13	14	17
<i>Fire Hydrant Leaks</i>	8	5	9
Total Leaks	77	80	82

FISCAL IMPACT

N/A

ENVIRONMENTAL DETERMINATION

This activity is not a "project" as defined by Section 21065 of the Public Resources Code or sections 15060(c)(2), 15060(c)(3), and 15378 of the CEQA Guidelines.

Prepared By:	Dale Wert, Water Division Manager
Concurs With:	Not Applicable
Reviewed By:	Paul Zampello, Assistant Public Works Director
Certified to Availability of Funds:	Not Applicable
Approved By:	Adam Raymond, City Manager
Legal Review:	Danny Aleshire, City Attorney
CEQA Review:	Not Applicable

Attachments

[A Water Distribution Update 2nd Quarter Presentation FY 2025-26.pdf](#)



FY 25/26 WATER DISTRIBUTION UPDATE (SECOND QUARTER)

PUBLIC WORKS, WATER DIVISION

WATER COMMISSION

JANUARY 22ND, 2026

DALE D. WERT , WATER DIVISION MANAGER



MAKING WORK TYPES CLEAR & CONSISTENT

- Water Division is work to improve how we track and report work types:
 - Emergency work
 - After-hours work
 - Regular work
- Developing a uniform code and plan to align GIS and forms by early 2026
- Updated table defines work categories for clearer tracking and reporting
- Definitions based on AWWA standards, adapted for our operations and GIS needs

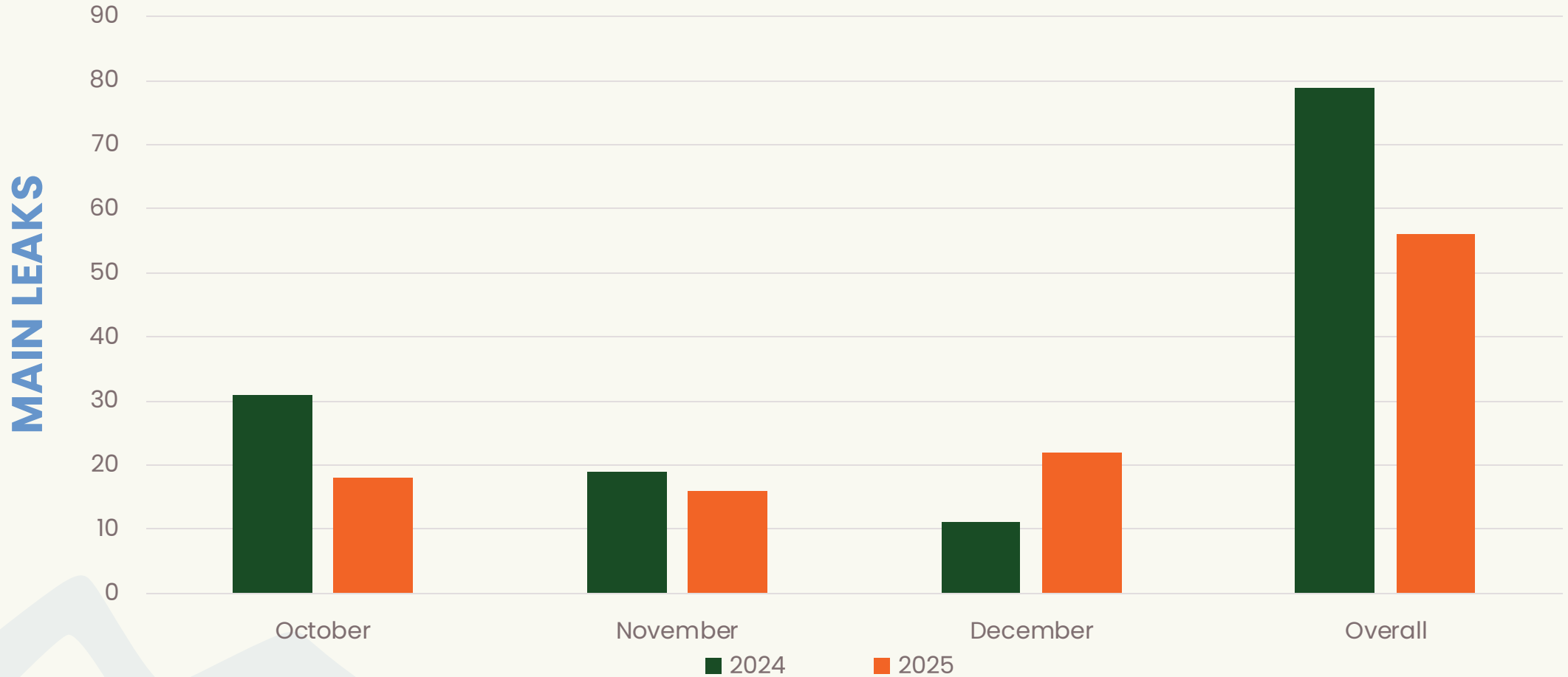
HOW LEAK TYPES GUIDE OUR RESPONSE

- **Emergency Leaks:**
 - Requires immediate response at any time
 - Poses a risk to public safety, property, or the water system
 - Examples: large main breaks, street flooding, water entering buildings, sheared fire hydrants
- **After-Hours Leaks:**
 - Occurs outside normal working hours
 - Response depends on severity
 - Only leaks meeting emergency criteria require immediate action
- **Regular Leak (Non-Emergency)**
 - No immediate threat to safety or service
 - Scheduled for repair during normal operations
 - Examples: small service line leaks, minor wet areas, slow meter pit leaks with no property damage

AFTER-HOURS VS. EMERGENCY LEAKS

Criteria	After-Hours Response	Emergency Leak Repair
Timing	Outside of business hours	Any time (priority-based)
Purpose	Inspection, isolation, temporary mitigation	Full, immediate repair
Urgency	Low to moderate	High
Example Leak	Dripping meter, small service leak, slow hydrant leak	Burst main, hydrant knock-over, flooding
System Impact	None or minimal	Pressure loss, service outages
Crew Deployment	One person or small team	Full crew, equipment, standby contractors (if needed)

MAIN LEAK HISTORY COMPARISON- 2024/2025 SECOND QUARTER

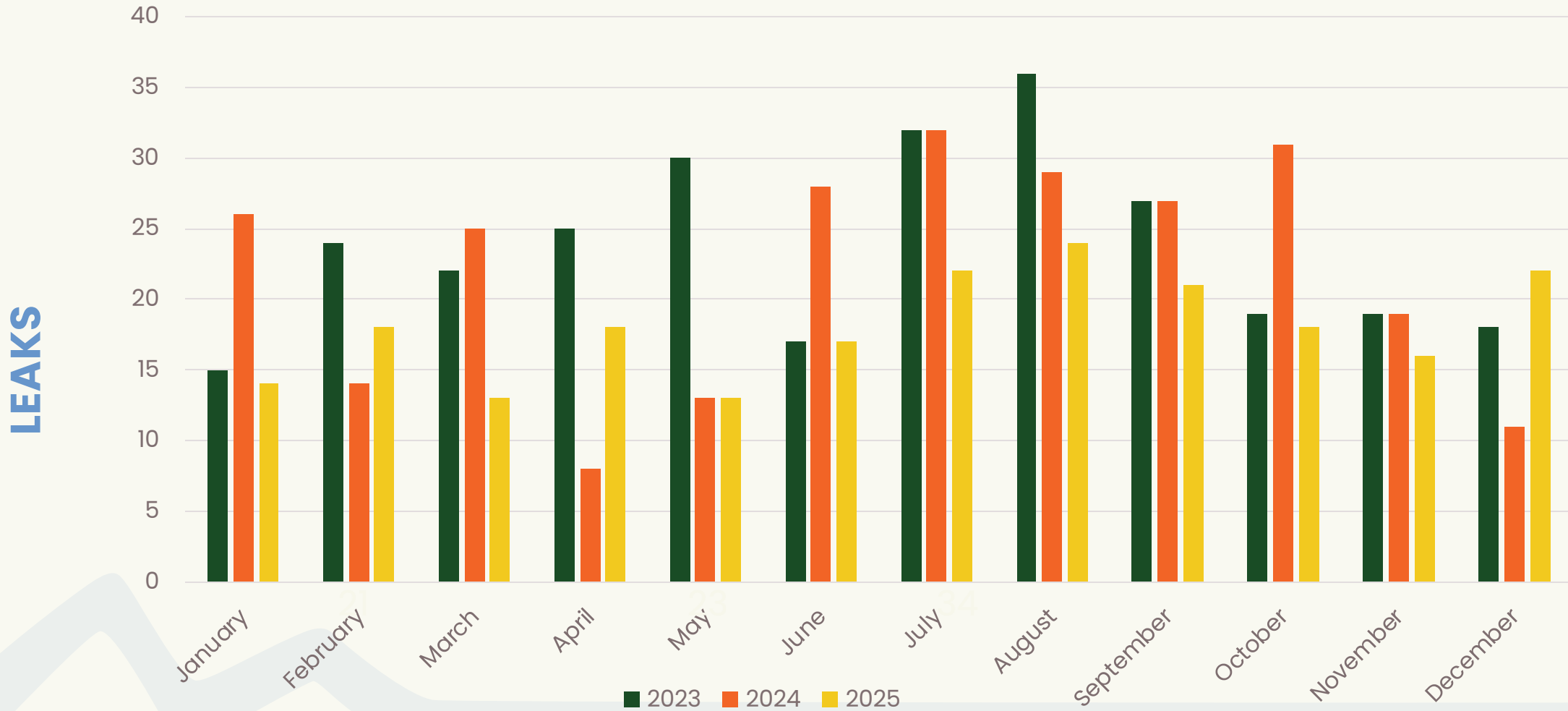




LEAK HISTORY COMPARISON- 2024/2025 SECOND QUARTER

Leak Types	2025	2024	2023
Mains	56	61	56
Service Lines	13	14	17
Fire Hydrants	8	5	9
Leak Totals	77	80	82

MAIN LEAK HISTORY THREE YEAR COMPARISON





RECOMMENDATIONS

RECEIVE AND FILE LOCAL WATER SUPPLY OUTLOOK
UPDATE



STAFF REPORT

TO: Chair and Commissioners

DATE: January 22, 2026

FROM: Public Works

DISTRICT(S): Citywide

SUBJECT: Water Conservation Program Update

RECOMMENDATION

That the Water Commission:

1. Receive and file the Water Conservation Program Update.

STRATEGIC FOCUS AREAS

N/A

EXECUTIVE SUMMARY

During the 2nd quarter of FY 2025/26, staff reports:

- Glendora received 8 rebate applications.
- MWD received 5 rebate applications.
- Performed 22 Water Use Efficiency (WUE) surveys.
- Issued 16 violation letters.

FY 2025/26-To-Date:

- 2 MWD Turf Replacement rebate applications were approved.

LEGISLATIVE HISTORY / PREVIOUS ACTIONS

On October 13, 2023, the Governor signed AB1572 into law, a state-wide ban on irrigation of Non-Functional Turf (NFT) with potable water on Commercial, Industrial, and Institutional (CII) properties. The ban will take effect starting January 1, 2027.

On July 3, 2024, the California State Water Resources Control Board adopted regulations under SB 606 and AB 1668 to promote long-term water conservation. The Urban Water Use Objective (UWUO) sets water agency limits for indoor, outdoor, and leakage water usage. The City of Glendora Water Division's reduction target is 15.5% of usage based on FY 2024-25.

DISCUSSION

Rebate Program

In the 2nd quarter of FY 2025/26:

- Glendora received 8 rebate applications.
- Metropolitan Water District (MWD) received 5 rebate applications.
- Glendora issued a total of \$3,734.03 rebated to customers.
- MWD issued a total of \$575.00 rebated to customers.

MWD Turf Replacement Rebate Applications

FY 2025/26-To-Date:

- 2 applications were approved.
- A total of 1,079 square feet of turf was removed.
- A total of \$2,158 from MWD's funding was rebated to customers.
- A total of \$2,158 from Glendora's funding was rebated to customers.

Water Use Efficiency (WUE) Surveys, Irrigation Retrofits and Violations

In the 2nd quarter of FY 2025/26:

- A total of 22 surveys were completed through MWD's collaboration.
- A total of 20 irrigation retrofits were performed.
- A total of 16 violations were issued.

Please reference Attachment A for the Water Conservation Dashboard FY2025/26.

Public Outreach and Water Education

In October, a Design Seminar workshop was held to demonstrate how to create drought resistant gardens, with each attendee receiving a \$25 plant voucher to local nurseries. These workshops are funded through the Metropolitan Water District.

MWD recently held its annual regional water conservation poster contest, and staff submitted the top 12 entries from Glendora's local contest held in May. We are thrilled to announce that an 8th grade student from Goddard Middle School has been selected as a winner out of thousands of students throughout Southern California and was invited to attend a special Student Recognition Event in December to receive an award at MWD's headquarters.

Staff promoted the 2026 Water Awareness Poster Contest to all Glendora teachers, with entries due by March 13, 2026. To support ongoing outreach efforts, a Water Awareness Poster Calendar was created featuring artwork from the previous year's winning students.

Staff conducted water conservation presentations at Sutherland and Washington Elementary schools, engaging students in discussions about the importance of saving water. The presentation covered topics such as local water resources, simple conservation techniques, and the environmental impact of daily water use.

Staff distributed a citywide bill insert informing customers about MWD's residential water efficiency rebate program and promoting MWD's Turf Replacement Program for eligible Commercial, Industrial, and Institutional (CII) customers. MWD temporarily increased its commercial turf removal rebate amount to \$7 per square foot, which created so much demand that the additional rebate funding has already been allocated. As a result, commercial property owners will now receive \$4 per square foot, for up to 50,000 square feet for commercial properties, to replace either functional or non-functional turfgrass, with climate-appropriate landscaping.

Water Conservation Programs

Staff continue to promote our co-funding partnership with the MWD through their residential Turf Replacement Program and Water Efficient Device Rebate Program. The City of Glendora is contributing an additional \$1 per square foot on top of MWD's \$3 per square foot incentive to replace existing turfgrass with drought-tolerant landscaping. Participants may also receive an extra \$100 per tree, for up to five trees, as part of this program. In addition, the City is providing matched funding for water-efficient device rebates to further support conservation efforts.

Residents continue to be able to take advantage of our water use efficiency survey program with WaterWise Consulting for free water use surveys, irrigation retrofits, and minor leak repairs to enhance water efficiency at their properties. These services are available at no cost to help the community conserve water.

Urban Water Use Objective (UWUO)

In December, City staff submitted the Urban Water Use Objective (UWUO) report to the California State Water Resources Control Board. The objective target showed a 15.5% reduction for fiscal year 2025/26. This 5% reduction from last year is due in part to slightly lower actual water use but also due to a higher allocation for our outdoor water budget based on an increase in the reference evapotranspiration rate (ET_o) used to calculate the outdoor water budget. The ET_o value is derived from the California Irrigation Management Information System, a network of 150 weather stations throughout the State, that the California Department of Water Resource uses to provide urban retail water suppliers calculations for the urban water use objective.

Although the objective target reduction was lower this year, Glendora is still projected to exceed the standard by 30% by 2040 and will continue to prepare for the alternative compliance pathway outlined in the regulation.

Urban Water Management Plan

The Urban Water Management Planning Act of California (ACT) requires urban water suppliers to update and submit an Urban Water Management Plan (UWMP), at least once every five years, in years ending in six and one, to achieve efficient water use and strengthen local drought planning. Three Valleys Municipal Water District (TVMWD) has agreed to serve as the lead agency in the development of the Regional Urban Water Management Plan on behalf of six of its member agencies, including the City of Glendora. The City has agreed to a Memorandum of Understanding (MOU) with TVMWD to provide a portion of the co-funding of the regional UWMP and is currently working with TVMWD to provide the necessary data for plan development. The Regional UWMP is expected to be completed by March of 2026.

Conservation Comparisons

Staff have continued to monitor water usage. This mandate compares current usage figures to 2024 usage numbers.

- Year-to-Date comparison: January to December 2025 shows an increase of 2.37% in water usage compared to the same period in 2024.

Reference Attachment B for the monthly comparison to 2024 usage to 2025.

FISCAL IMPACT

There is no fiscal impact to receive and file the Water Conservation Program Update

ENVIRONMENTAL DETERMINATION

This activity is not a "project" as defined by Section 21065 of the Public Resources Code or Sections 15060(c)(2), 15060(c)(3), and 15378 of the CEQA Guidelines.

Prepared By: Russell Ackerman, Senior Management Analyst
Concurs With: Not Applicable

Reviewed By: Paul Zampello, Assistant Public Works Director
Certified to Availability of Funds: Marie Ricci, Deputy City Manager

Approved By: Adam Raymond, City Manager
Legal Review: Not Applicable
CEQA Review: Not Applicable

Attachments

[A_FY2025-2026_2nd_Quarter_Dashboard.pdf](#)

[B_Monthly_Water_Use_Comparison_-_CY2024_to_2025.pdf](#)

[C_Power_Point_Presentation.pdf](#)

Water Conservation Dashboard FY 2025-2026

Outreach & Education

Method	July	August	September	October	November	December	January	February	March	April	May	June	YTD
Education (Presentations)	1	0	1	1	1	0							4
Public Outreach (Events)	0	2	1	1	0	0							4
Constant Flow Tags	48	0	25	4	15	25							117

Violation Notifications

Method	July	August	September	October	November	December	January	February	March	April	May	June	YTD
Green Door Tag/Letter	8	10	4	2	3	11							38

Conservation Ordinance Penalties

Penalty	July	August	September	October	November	December	January	February	March	April	May	June	YTD
1st Fine (\$150)	\$0	\$0	\$0	\$0	\$0	\$0							\$0
2nd Fine (\$250)	\$0	\$0	\$0	\$0	\$0	\$0							\$0
3rd Fine (\$1,000)	\$0	\$0	\$0	\$0	\$0	\$0							\$0
Misdemeanors	0	0	0	0	0	0							0
Penalties Assessed	\$ -	\$ -	\$ -	\$ -	\$ -	\$ -							\$0

Water Use Efficiency - Field Surveys

Type of Survey	July	August	September	October	November	December	January	February	March	April	May	June	YTD
Residential	12	3	4	10	7	3							39
Commercial/Industrial	0	0	0	0	0	1							1
Institutional	0	0	0	1	0	0							1
Cumulative Number	12	3	4	11	7	4							41

Glendora/MWD Co-Funding Device Rebate Program Application By Item

Rebate Category	July	August	September	October	November	December	January	February	March	April	May	June	YTD
High Efficiency Toilet	0	0	0	0	0	0							0
Clothes Washer	1	0	0	0	3	0							4
Irrigation Controller	3	0	4	2	1	0							10
HE Irrigation Nozzles	0	0	0	40	0	0							40
Rain Barrel	0	0	0	0	0	0							0
Hose Bib Irrigation Controller	0	0	0	0	0	0							0
Total Applications	4	0	4	42	4	0							54

Glendora/MWD Co-Funding Device Rebate Program By Dollar Amount

Rebate Category	July	August	September	October	November	December	January	February	March	April	May	June	YTD
High Efficiency Toilet	\$0.00	\$0.00	\$0.00	\$0.00	\$0.00	\$0.00							\$0.00
Clothes Washer	\$170.00	\$0.00	\$0.00	\$0.00	\$510.00	\$0.00							\$680.00
Irrigation Controller	\$462.95	\$0.00	\$217.96	\$259.97	\$129.06	\$0.00							\$1,069.94
HE Irrigation Nozzles	\$0.00	\$0.00	\$0.00	\$160.00	\$0.00	\$0.00							\$160.00
Rain Barrel	\$0.00	\$0.00	\$0.00	\$0.00	\$0.00	\$0.00							\$0.00
Hose Bib Irrigation Controller	\$0.00	\$0.00	\$0.00	\$0.00	\$0.00	\$0.00							\$0.00
MWD Allocated Funds	\$ 325.00	\$ -	\$ 217.96	\$ 240.00	\$ 335.00	\$ -							\$ 1,117.96
Glendora Allocated Funds	\$ 137.95	\$ -	\$ 320.00	\$ 179.97	\$ 304.06	\$ -							\$ 941.98
Total Reimbursement	\$ 462.95	\$ -	\$ 537.96	\$ 419.97	\$ 639.06	\$ -							\$2,059.94

Glendora Funded Rebate Program Application By Item

Rebate Category	July	August	September	October	November	December	January	February	March	April	May	June	YTD
Pool Cover	7	2	3	1	1	0							14
Landscape Design	0	0	0	0	1	2							3
Landscape Installation	0	0	0	0	1	2							3
Total Applications	7	2	3	1	3	4							20

Water Conservation Dashboard FY 2025-2026

Glendora Funded Rebate Program By Dollar Amount

Rebate Category	July	August	September	October	November	December	January	February	March	April	May	June	YTD
Pool Cover	\$868.38	\$250.00	\$366.28	\$125.00	\$125.00	\$0.00							\$1,734.66
Landscape Design	\$0.00	\$0.00	\$0.00	\$0.00	\$500.00	\$1,000.00							\$1,500.00
Landscape Installation	\$0.00	\$0.00	\$0.00	\$0.00	\$500.00	\$1,000.00							\$1,500.00
Total Reimbursement	\$ 868.38	\$ 250.00	\$ 366.28	\$ 125.00	\$ 1,125.00	\$ 2,000.00							\$4,734.66

Glendora/MWD Co-Funding Turf Replacement Program Applications

Rebate Category	July	August	September	October	November	December	January	February	March	April	May	June	YTD
Applications Completed	0	0	1	0	1	0							2
Square Footage Completed	0	0	259	0	820	0							1,079
MWD Allocated Funds	\$ -	\$ -	\$ 518.00	\$ -	\$ 1,640.00	\$ -							\$ 2,158.00
Glendora Allocated Funds	\$ -	\$ -	\$ 518.00	\$ -	\$ 1,640.00	\$ -							\$ 2,158.00
Total Reimbursement	\$ -	\$ -	\$ 1,036.00	\$ -	\$ 3,280.00	\$ -							\$ 4,316.00

Non-Functional Turf Replacement Program Applications- ONLY For CII Properties

Rebate Category	July	August	September	October	November	December	January	February	March	April	May	June	YTD
Applications Completed	0	0	2										2
Square Footage Completed	0	0	4,925										4,925
Total Reimbursement	\$ -	\$ -	\$ 19,700.00										\$ 19,700.00

■ NFT Program has been sunsetted

Attachment B: Monthly Water Use Comparison – CY 2024 to 2025

State Reporting Figures- 2024 v. 2025

Reporting Period		Year		Difference (2024 v. 2025)
Month	No. of Days	2024	2025	%
	January	31	547.54	751.11
February	28	441.14	526.48	+19.35%
March	31	490.15	567.83	+15.85%
April	30	555.18	742.39	+33.72%
May	31	763.25	823.93	+7.95%
June	30	912.16	963.48	+5.63%
July	31	1,069.23	1,069.87	+0.06%
August	31	1,132.39	1,119.33	-1.15%
September	30	1,035.28	1,011.75	-2.27%
October	31	932.00	838.69	-10.01%
November	30	779.24	622.83	-20.07%
December	31	771.42	614.76	-20.31%
Total		9,428.98	9,652.45	+2.37%



WATER CONSERVATION UPDATE

PUBLIC WORKS, WATER DIVISION

WATER COMMISSION

JANUARY 22, 2026

RUSSELL ACKERMAN, SENIOR MANAGEMENT ANALYST



EDUCATION/OUTREACH

Social Media



cityofglendora

dvushkinlion • Original audio



cityofglendora 💧 HAPPY WATER PROFESSIONALS

APPRECIATION WEEK! | This week we celebrate the heroes behind every drop! From clean drinking water to reliable water systems, our Water Division keeps #GlendoraWater clean, safe, and always flowing.

🥂 Cheers to our dedicated staff who make it look easy.

Leave a ❤️ in the comments to show your appreciation!

#Glendora #water #WaterProfessionalsWeek
#ThankYouWaterPros #CaliforniaWater

12w



164 others

October 7, 2025



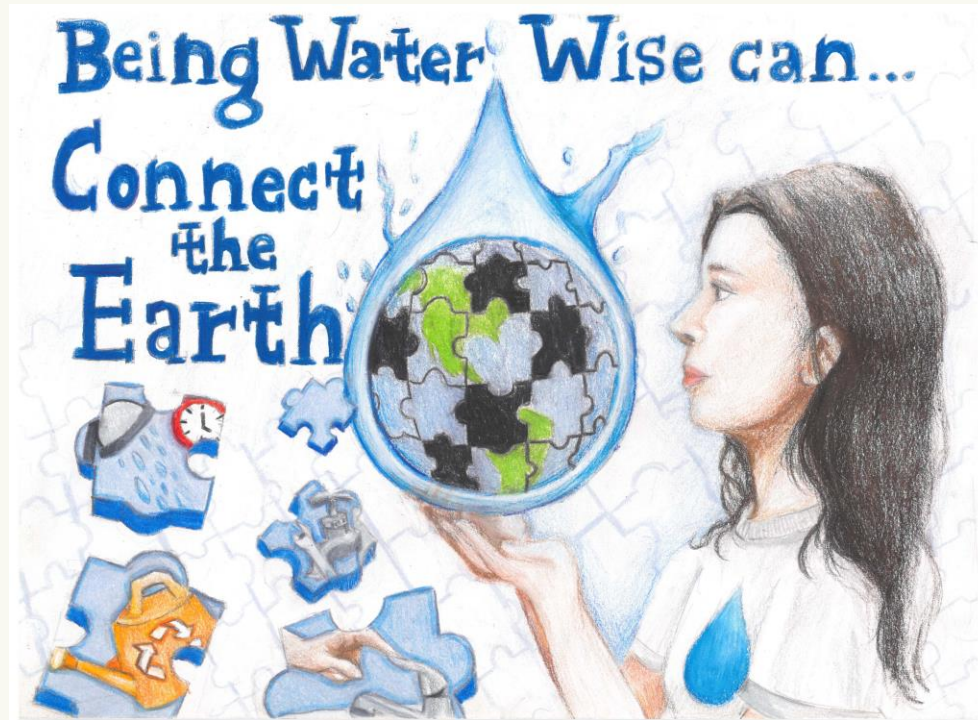
Add a comment...

Post

EDUCATION/OUTREACH

MWD- "WATER IS LIFE" POSTER CONTEST

Kathy Li
Goddard Middle School
8th Grade



EDUCATION/OUTREACH

2026 WATER AWARENESS POSTER CONTEST



Glendora WATER AWARENESS POSTER CONTEST



2026 CONTEST THEME: BEING WATER WISE IS...

CONTEST RULES

Deadline: March 13, 2026

- Open to K-12 grade students in Glendora
- Submissions must reflect the student's own ability. Professional/parental assistance is not allowed.
- Posters must be drawn horizontally on 8.5 x 11 inch paper. Ex.  

- All artwork must be original. Do not submit artwork with traced, trademarked, or copyrighted slogans or characters (i.e. Snoopy, Sponge Bob, Dora the Explorer, etc.) No images generated through AI platforms.

- A short message must be written on the artwork (not necessarily the words of the theme). The less text the better.

- Art with misspelled words will not be selected.

- Bold, bright, brilliant colors show up the best. Students may use the following art media: crayons, markers, pencils, paints, watercolors, and chalk.

- The use of glitter or glue is not allowed.

- Must include contact information on the back of the poster with a **label or in pencil**. If markers bleed through paper, the poster may be disqualified.

- The winning posters will also be submitted to Metropolitan Water District of Southern California (MWD) for further judging as entries in their calendar contest.

SUBMIT YOUR ARTWORK

Please clearly write the following information with a **label or pencil** on the back of your poster:

- Student Name
- School Name
- Grade Level
- Teacher Name

Mail or Drop Off Entries To:

If submitting by mail, entry must be received by the due date.

City of Glendora
1051 E. Sierra Madre Avenue
Glendora, CA 91741
Attn: Water Awareness Contest

AWARDS

3 winners will be selected from each grade group:

K-2 **3-5** **6-8** **9-12**

ALL winners will be invited to an awards ceremony!

AWARDS

1st Place= \$100

2nd Place= \$75

3rd Place= \$50

Questions? adejesus@cityofglendora.gov or (626) 852-4838



EDUCATION/OUTREACH

WATER AWARENESS POSTER CALENDAR



Stanton Elementary School

Hannah Yu - 4th Grade ***** Glendora

January 2026 Collect rainwater for outdoor watering needs!

SUNDAY	MONDAY	TUESDAY	WEDNESDAY	THURSDAY	FRIDAY	SATURDAY
				1 New Year's Day	2	3
4	5	6	7	8	9	10
11	12	13	14	15	16	17
18	19 Martin Luther King Jr. Day	20	21	22	23	24
25	26	27	28	29	30	31

EDUCATION/OUTREACH

WATER EDUCATION PROGRAM

**Washington Elementary,
4th grade class**



EDUCATION/OUTREACH

Water Bill Insert

MWD Residential Rebates 2025

Residential rebates are available from Metropolitan Water District which include High-Efficiency appliances.

Apply now and don't wait for these savings to flush down the drain!



City of Glendora Water Customers receive an additional price match for all water efficient devices!

Regional Residential Program	MWD Incentive
Clothes Washers	\$85
Premium Efficient Toilets	\$40
Rotating Sprinkler Nozzles	\$2/nozzle
Smart Irrigation Controllers	
Under one acre	\$80
One acre or larger	\$35/station
Rain Barrels (max. 2 per home)	\$35 per barrel
Cistern	
Varies on size	\$250-\$350
Turf Replacement	\$4 per sq. ft.
(max. 5,000 sq.ft.)	



WaterSmart bewaterwise.com (888) 376-3314

For more detailed information visit: socalwatersmart.com

DON'T WAIT
APPLY NOW!

GET PAID TO SAVE WATER!

\$7 per sq. ft. Turf Replacement Rebate for Commercial, Industrial, and Institutional (CII) Properties!



What's the Offer?

Metropolitan Water District is offering **\$7 per square foot** to replace grass with water-efficient landscaping!

Who's Eligible?

- CII Properties including HOA's, schools and business parks.
- Located within MWD's service area
- Must apply and receive approval before removing turf

What's Required?

- Remove living turf grass
- Install drought-tolerant plants
- Capture rainwater on site
- Add efficient irrigation
- Apply mulch to exposed soil



Act Now and Apply!

Learn More & Apply bewaterwise.com

Learn More About Current Non-Functional Turf Regulations calwep.org/nft

*Funds are limited and offered first-come, first-served!

(888) 376-3314



WaterSmart bewaterwise.com

Glendora

EDUCATION/OUTREACH

DESIGN SEMINAR



CONSERVATION PROGRAMS

LANDSCAPE PROFESSIONAL SERVICES REIMBURSEMENT PROGRAM

- **Landscape Design**
 - \$500 rebate
- **Licensed Professional**
 - \$500 rebate



The flyer features a green header with the city name 'Glendora' in a stylized font. Below the header, the title 'LANDSCAPE PROFESSIONAL SERVICES Reimbursement Program' is displayed. The main content is organized into three vertical sections, each with an icon and a circular image to the right. The first section, 'Landscape Design', includes an icon of a clipboard and a circular image of a landscape plan. The second section, 'Licensed Professional', includes an icon of hands planting a tree and a circular image of a worker installing plants. The third section, 'Benefits', includes an icon of a sun and water drops and a circular image of a finished garden. A dark green footer contains the phone number (626) 852-4838 and the website CITYOFGLENDORA.ORG/WATERREBATES.

Glendora

LANDSCAPE PROFESSIONAL SERVICES
Reimbursement Program

Ensure the success of your new landscape. Hire a professional to design and install it!

Landscape Design
Receive up to \$500 for using a landscaping design professional.

Licensed Professional
Receive an additional \$500 for using a licensed installation professional to complete your project.

Benefits
Converting to a California friendly landscape provides numerous advantages such as environmental sustainability, low maintenance, and economic savings.

(626) 852-4838 • CITYOFGLENDORA.ORG/WATERREBATES

EDUCATION/OUTREACH

Upcoming Events

- **Earth Day**
 - Finkbiner Park
 - Saturday, April 18, 2026



CONSERVATION PROGRAMS

WATERWISE CONSULTING WATER USE EFFICIENCY SURVEY PROGRAM

Residential & Commercial Water Efficiency Survey

bewaterwise.com » [Rebates](#) » [Water Efficiency Survey](#)



CONSERVATION PROGRAMS

MWD PARTNERSHIP

- **Residential Turf Replacement Program**

- MWD + \$3 sq /ft
- City of Glendora + \$1 = **\$4 sq ft**

- **MWD Device Rebates- Price Matching**

- Toilets
- Washing Machines
- Irrigation Controllers
- Rain Barrels

Ex. Toilet Rebate

- MWD \$80 + Glendora \$80= up to \$160



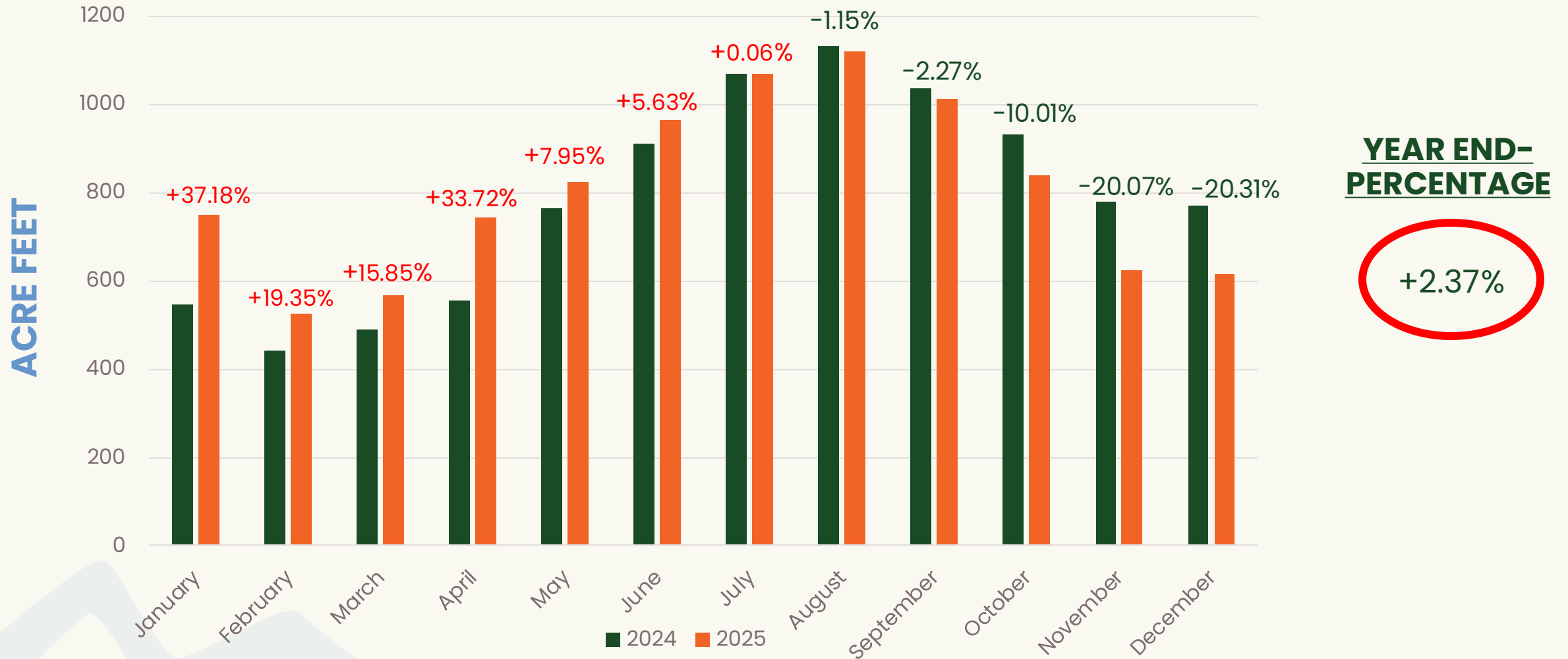
CONSERVATION PROGRAMS

MWD PARTNERSHIP

- **Commercial Turf Replacement Program**
 - MWD = up to ~~\$7~~ **\$4 sq ft**
 - **Must apply by Feb 28, 2026**

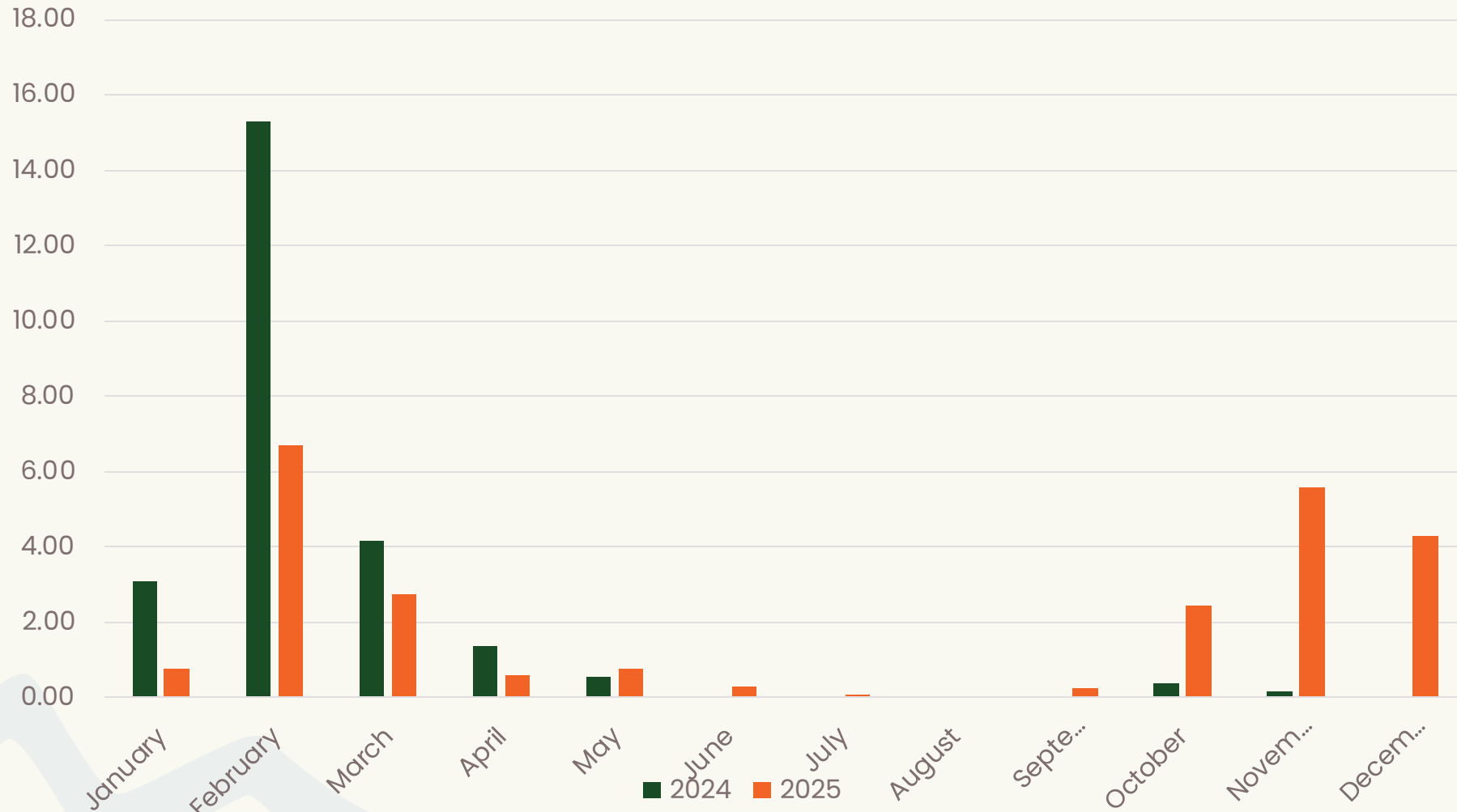


CITY COMPARISON FIGURES- 2024 V. 2025



RAINFALL COMPARISON - 2024 V. 2025

INCHES OF RAIN

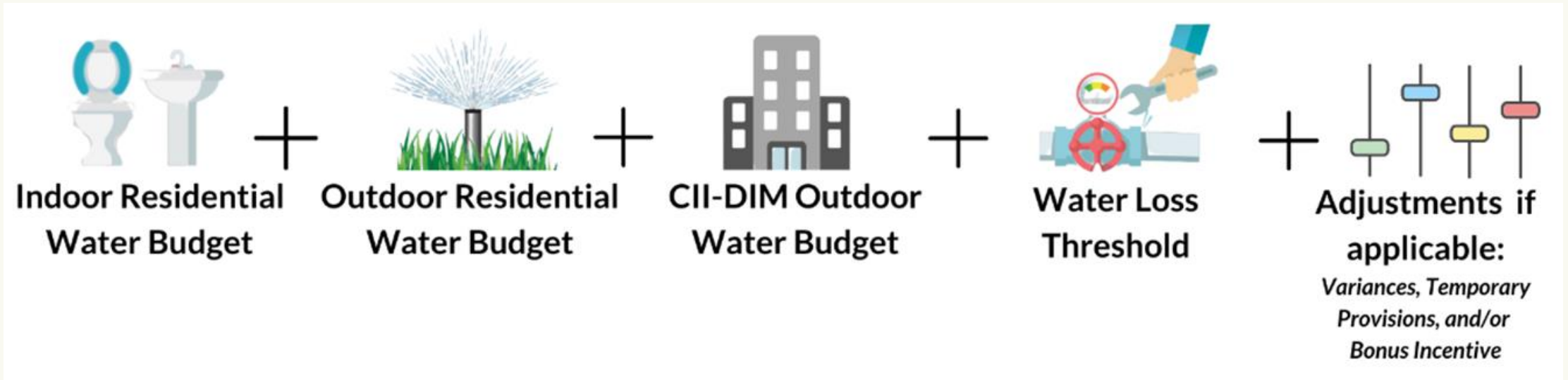


YTD- RAIN DIFFERENCE

- 2024= 24.49"
- 2025= 25.02"
- -0.53"

CONSERVATION LEGISLATION

URBAN WATER USE OBJECTIVE



City of Glendora FY 23/24 UWUO = -20.3%
City of Glendora FY 24/25 UWUO = -15.5%

CONSERVATION LEGISLATION

Evapotranspiration Rates (ETo) (Residential Outdoor Water Budgets)

Eto FY 23/24 46.35 inches/year

Eto FY 24/25 54.12 inches/year

Budget **↑ 582 Acre Feet**



ACTUAL WATER USE (- 3.3%)

FY 23-24 to FY 24-25 **↓ 291 Acre Feet**



CONSERVATION LEGISLATION

CALIFORNIA IRRIGATION MANAGEMENT INFORMATION SYSTEM (CIMIS)



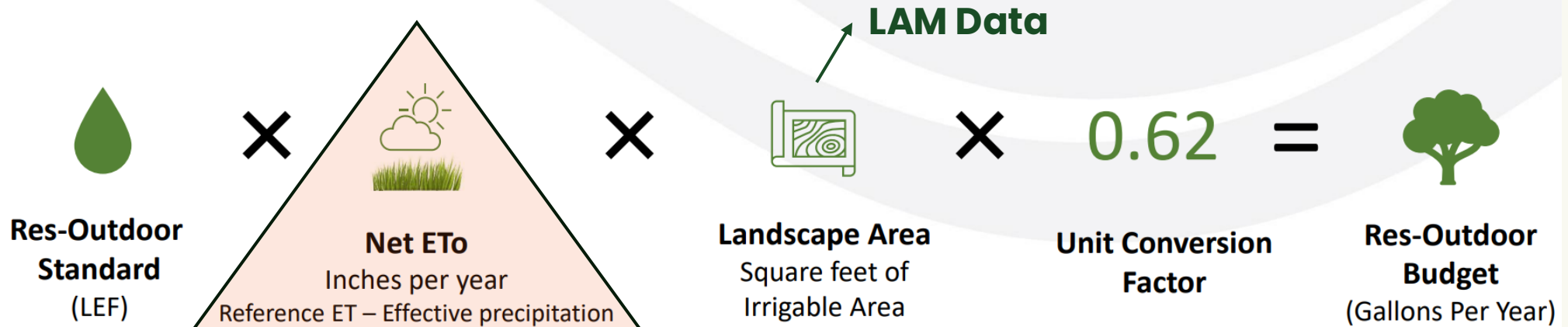
CIMIS is the source of ETo data the Dept of Water Resources uses to provide urban retail water suppliers calculations for the urban water use objective.

- CIMIS is a network of over 150 automated weather stations throughout the state that measure weather data.
- CIMIS provides daily maps of ETo at 2-km grid using the Spatial CIMIS modeling approach that couples satellite data with point measurements for each urban retail water supplier to derive an area weighted average value from the Spatial CIMIS ETo.



CONSERVATION LEGISLATION

Efficient Residential Outdoor Budget



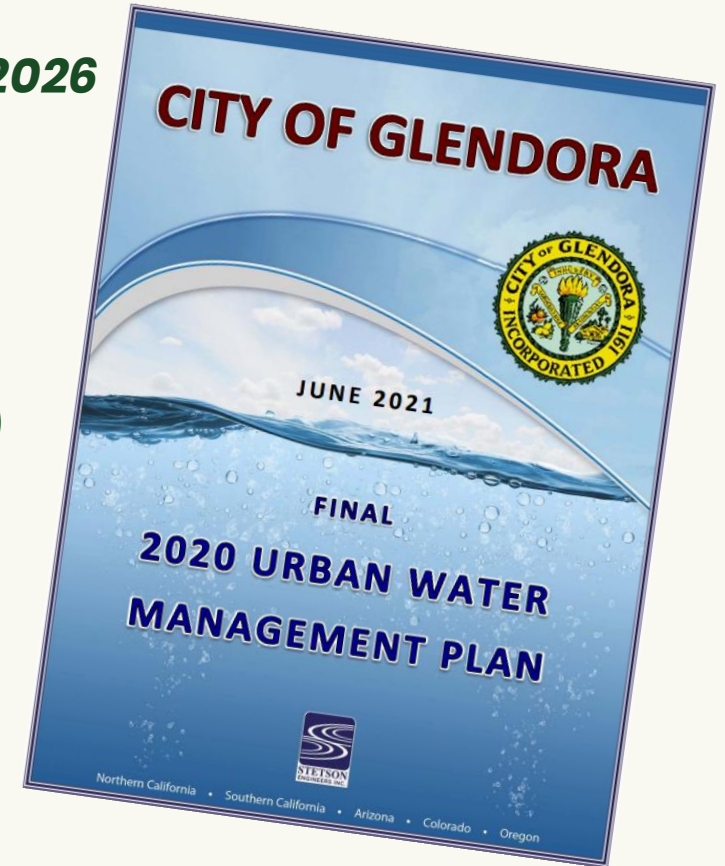
Parameter	Source Specified in Reg Text	Alternative data allowed?	Reg Text Section
Reference ET	DWR (CIMIS)	Yes	975(b)(2)(B)
Effective Precipitation	DWR (Cal-SIMETAW)	Yes	975(b)(2)(B)
Landscape Area	DWR (LAM)	Yes	975(b)(2)(C)

2025-2035 = 0.80 LEF
2035-2040 = 0.63 LEF
2040 -> = 0.55 LEF

CONSERVATION LEGISLATION

THREE VALLEYS MUNICIPAL WATER DISTRICT

- **Regional Urban Water Management Plan – *expected Mar 2026***
 - **City of Glendora**
 - **City of La Verne**
 - **Golden State Water Company (Claremont, San Dimas)**
 - **Rowland Water District**
 - **Walnut Valley Water District**



QUESTIONS?

RECOMMENDATION

THAT THE WATER COMMISSION:

- 1) RECEIVE AND FILE THE WATER CONSERVATION PROGRAM UPDATE**



STAFF REPORT

TO: Chair and Commissioners

DATE: January 22, 2026

FROM: Public Works

DISTRICT(S): Citywide

SUBJECT: Water Supply Outlook

RECOMMENDATION

That the Water Commission:

1. Receive and file the Water Supply Outlook.

STRATEGIC FOCUS AREAS

Goal 5: Improve and Maintain the City's Infrastructure and Facilities

EXECUTIVE SUMMARY

In the second quarter of Fiscal Year 2025-26, staff continued to monitor and manage key water supply conditions. Wet weather and ongoing water deliveries played a role in influencing local water sources during this period. The City received updated information on groundwater supplies from the Main San Gabriel Basin, a critical source of water for our community. Staff also tracked rainfall and snow pack levels, as well as water storage conditions for State and Colorado River reservoir levels, which affect our long-term water outlook. Updates from regional water providers within the Main San Gabriel Basin were reviewed to help ensure coordinated efforts in water management. In addition, the report includes current data on local water supplies, including storage levels at the San Gabriel River dam and water production by the City's Water Division. This summary reflects the City's ongoing commitment to responsibly managing water resources and keeping the community informed.

LEGISLATIVE HISTORY / PREVIOUS ACTIONS

Not Applicable.

DISCUSSION

The City currently obtains water supply from three water sources. The primary source is groundwater wells within the Main San Gabriel Basin through the two sub-basins; San Gabriel Canyon and the Glendora. The second source is imported water provided by the Metropolitan Water District of Southern California (MWD) through Three Valleys Municipal Water District (TVMWD). The third source is local treated surface water and groundwater obtained from the Covina Valley Water Company (CVWS), formerly Covina Irrigating Company (CIC).

The two sub-basins of the Main San Gabriel Basin, Glendora Basin and the San Gabriel Canyon Basin, currently supply the all of the City's annual water demand. The past 5-year average was 96% pumped and 4% purchased. The production efficiency of both sub-basins are influenced by local storm water runoff and import replenishment water deliveries. Historically, both basins are unsustainable without imported water deliveries.

The Baldwin Park Key Well (Key Well), located in the central portion of the San Gabriel Valley, provides a general indication of water elevations throughout the Main San Gabriel Basin. One vertical foot in the Key Well is equivalent to approximately 8,000 acre-feet (AF) of ground water. On January 2, 2025, the Key Well measured 244.1 feet (FT), which is 6.2 FT lower than on October 3, 2025 when the Key Well measured 250.3 FT. That water level on October 3rd also includes 158,000 AF of imported untreated water in cyclic storage, which represents about 20 FT of groundwater elevation at the Key Well.

Precipitation

The City has received over 14 inches of rainwater from October 1, 2025 through December 31, 2025, the South Coast Hydrologic Region as of January 5, 2026 has received 14.04 inches of rain. The historic State average is 9 inches for this time.

By comparison, in 2024, rainfall totaled 24.86 inches for the year, slightly above the City's annual average of 24 inches, as per historic measurements recorded at the Water Division Operations Yard.

San Gabriel Canyon Reservoir Storage

California's reservoirs are currently experiencing increased water storage due to recent storms and snow pack melt, with many major reservoirs rising considerably, though levels vary regionally.

Cogswell Reservoir is the highest reservoir in the San Gabriel Canyon watershed and has a maximum water storage capacity of 10,475 AF. Downstream are San Gabriel Reservoir, which holds up to 44,044 AF, and Morris Dam with a maximum water storage capacity of 28,736 AF. Total maximum capacity for the three locations is 83,255 AF.

As of January 6, 2026, the combined storage of the three reservoirs was approximately 77,000 AF, which is 92% of the maximum capacity. Water released from the San Gabriel Canyon watershed is used at local surface water treatment plants and for groundwater replenishment.

Untreated Imported Water Deliveries

The Upper San Gabriel Valley Municipal Water District (USG-3) is a raw water intake just below Morris Dam. This is the primary delivery point for untreated imported water for groundwater replenishment in the San Gabriel Valley. The typical delivery rate is about 190 cubic feet per second (CFS), or about 375 AF per day.

Upper San Gabriel Valley Municipal Water District (USGVMWD)

USGVMWD had planned to deliver a total of 160,000 AF before the end of the calendar year. USGVMWD began deliveries through USG-3 at about 300 CFS on May 21, 2025. As of September 24, 2025, USG-3 operations were halted due to the golden mussel being found in Silverwood Lake.

July 2025 deliveries were 12,544 AF

August 2025 deliveries were 18,185.7 AF

Total deliveries for 2025 are 85,552.2 AF, as of December 28, 2025.

San Gabriel Valley Municipal Water District (SGVMWD)

In September 2025, SGVMWD delivered an estimated, 535 AF to San Gabriel Canyon Canal and about 160 AF for San Gabriel Canyon Spreading Ground Basin 1. As previously noted, as of September 24, 2025, USG-3 operations were halted due to the golden mussel being found in Lake Silverwood.

Three Valleys Municipal Water District (TVMWD)

TVMWD plans to deliver a total of 35,000 AF.

As of November 30, 2025, a total of 13,229.3 AF had been delivered under the MWD Letter Agreement. No deliveries were made through USG-3 or to San Gabriel Spreading Ground Basin 1. As previously noted, as of September 24, 2025, USG-3 operations were halted due to the golden mussel being found in Lake Silverwood.

Imported Treated Water Connections

The City of Glendora has the following three MWD water connections which deliver treated water, and were formerly known as Pomona Municipal (PM):

PM-18 (Pressure Zone 2)

PM-6 (Pressure Zone-1)

PM-23 (Pressure Zone-1)

These connections have a combined capacity of 40 CFS, or approximately 18,000 gallons per minute (GPM), sufficient to meet peak system demand. No water has been delivered using these imported treated water connections during the 2nd quarter of FY 2025-26.

Glendora Water Production and Purchases as of December 2025

The City Wells have been producing a total of 10,585 GPM or 23.58 CFS. The Water System is currently delivering 100% Well Water and 0% MWD Imported Water.

The water level of San Gabriel Canyon Sub-Basin was measured at Well-8 on December 22, 2025. The dynamic water level was 70.0 FT, and the static water level 54.0 FT. In September 2025, the static water level was 51.4, which represents an decrease in water level of approximately 2.6 FT from September to December. On the same day, the water level in the Glendora Basin was measured at Well-11. The dynamic water level was 335.0 FT, and the static water level was 305.0 FT. In September 2025 the (Static) level was 331 FT. That is an increase in water level of 26 FT.

Wells Production through the months of October thru December 2025:

October 841.05 AF

November 627.42 AF

December 614.79 AF

Compared to October thru December 2024:

October 931.91 AF

November 779.20 AF

December 772.20 AF

California and Colorado River - Rain and Snow pack Information

Snow pack: Monitoring data was updated on January 6, 2026.

Sierra snow pack peaks in April. Last year the Colorado River Basin snow pack peaked on April 9, 2025. The State's major storage reservoirs are currently at an average of 90% of full capacity statewide. Storage in the Colorado system Lake Powell is at 25% of full capacity and Lake Mead is at 31% of full capacity, as of January 8, 2025. The State Water Supply Allocation was set at 50% on April 29, 2025, and remains at 50% allocation.

Canyon Basin well production continues to be steady.

The spreading of water in the upper basin and Main San Gabriel Basin spreading grounds is the major contributor to this condition. The basin has decreased slightly over the last 3 months. Drawdown in the basin has been slow and still maintaining higher levels than in the past 4 years.

PM-26 Connection at Dalton Wash Spreading Operations

Spreading operations began on April 1, 2025. As of September 30, 2025, a total of 784.1 AF of untreated water has been spread at the Little Dalton Spreading Grounds. TVMWD requested a total delivery of up to 4,500 AF of untreated water through the PM-26 connection. The current program was halted in September due to the Golden Mussel being found in Lake Silverwood.

FISCAL IMPACT

There is no fiscal impact to receive and file of this report.

ENVIRONMENTAL DETERMINATION

There is no CEQA impacts associated with the recommendations in this report.

Prepared By:	Damian Martinez, Water Division Manager
Concurs With:	Not Applicable
Reviewed By:	Paul Zampielo, Assistant Public Works Director
Certified to Availability of Funds:	Not Applicable
Approved By:	Adam Raymond, City Manager
Legal Review:	Not Applicable
CEQA Review:	Not Applicable

Attachments



STAFF REPORT

TO: Chair and Commissioners

DATE: January 22, 2026

FROM: Public Works

DISTRICT(S): Citywide

SUBJECT: Water Division Operations Update

RECOMMENDATION

That the Water Commission:

1. Receive and file the Water Division Operations Update.

STRATEGIC FOCUS AREAS

Not Applicable.

EXECUTIVE SUMMARY

Not Applicable.

LEGISLATIVE HISTORY / PREVIOUS ACTIONS

Not Applicable.

DISCUSSION

Not Applicable.

FISCAL IMPACT

Not Applicable.

ENVIRONMENTAL DETERMINATION

Not Applicable.

Prepared By: Ivy Gonzalez, Management Analyst

Concurs With: Not Applicable

Reviewed By: Insert Department Director Name, Title

Certified to Availability of Funds: Not Applicable

Approved By: Adam Raymond, City Manager

Legal Review: Not Applicable

CEQA Review: Not Applicable

Attachments

[A_Water_Division_Operations_Update.pdf](#)



WATER DIVISION OPERATIONS UPDATE

PUBLIC WORKS

WATER COMMISSION

JANUARY 22, 2026

PAUL ZAMPIELLO, ASSISTANT PUBLIC WORKS DIRECTOR





GOLDEN MUSSEL STATUS UPDATES

GOLDEN MUSSELS CONCERNS

Basin spreading at USG-3 shut off on September 21.

Upper District, Three Valleys, and Watermaster drafted a Mitigation Plan.

Glendora participated in stakeholder meetings.

County rejected the plan, requesting eradication/elimination.

CURRENT CHALLENGE

Need for coordinated regional response to advance a feasible mitigation plan.

Engagement with County leadership may be required to reach agreement.



WATER OPERATION UPDATES



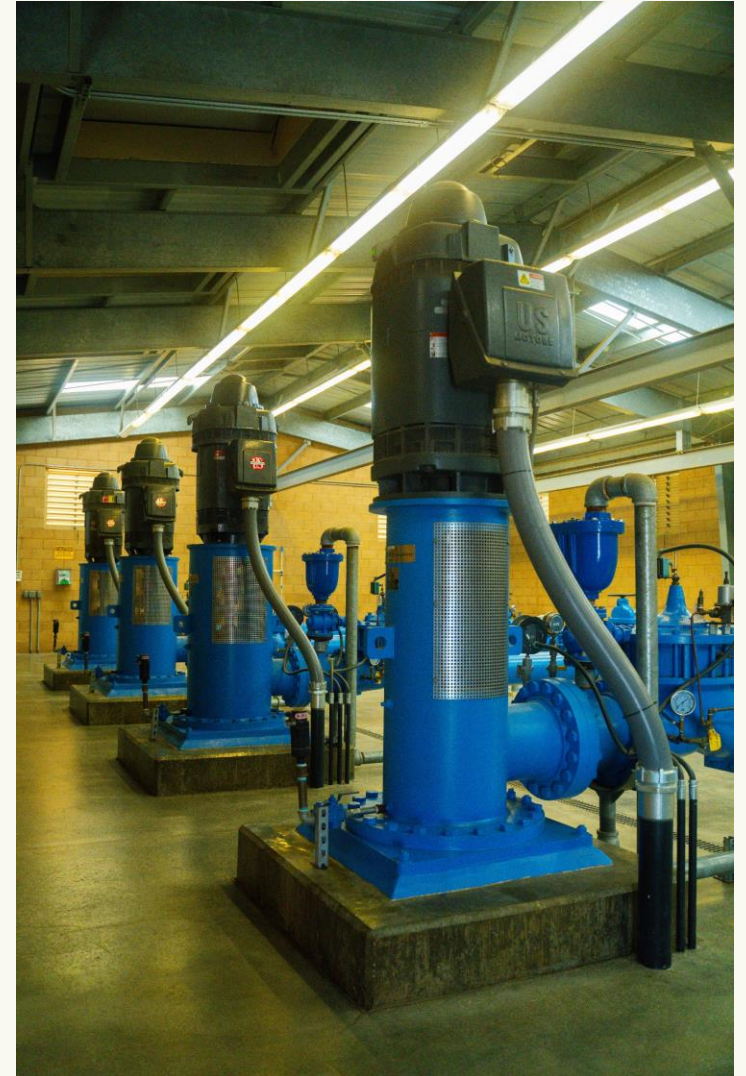
WATER SYSTEM CAPACITY & SUPPLY ASSESSMENT

Staff is working with consultant Stetson Engineers to conduct a water supply and capacity assessment. Stetson will be evaluating the following:

- Primary and secondary water sources
- Well capacity
- Historical groundwater levels
- Existing and potential interconnections

Objective: Assess system reliability under future basin conditions.

Purpose: Inform long-term planning and capital investments



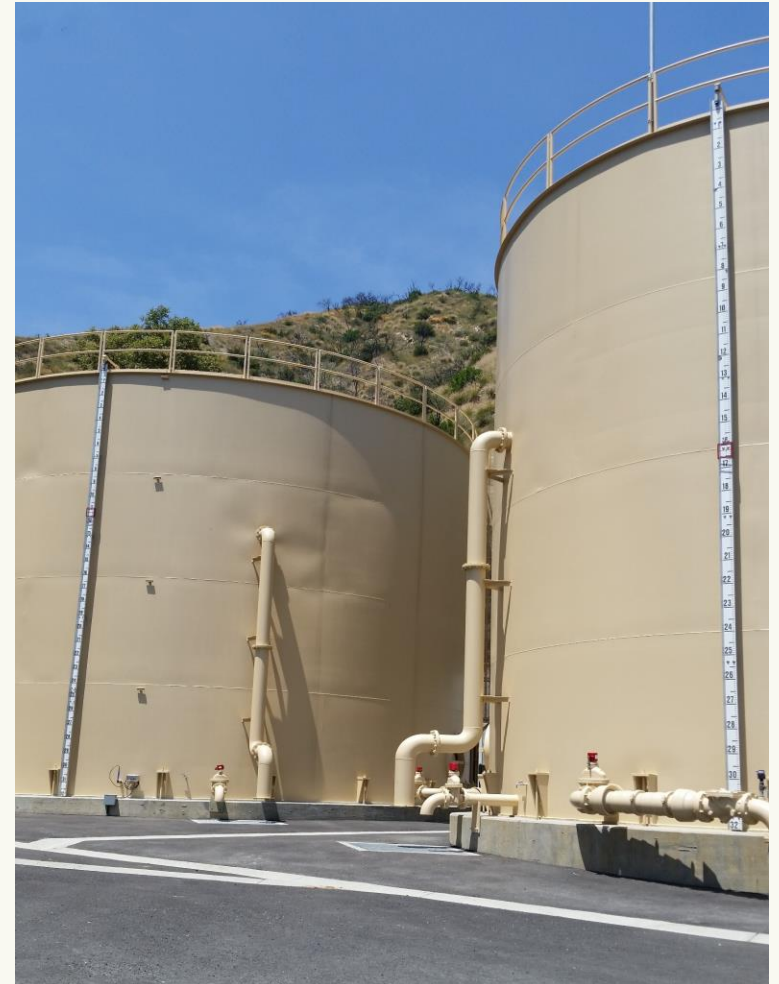
DDW SANITARY SURVEY & CROSS-CONNECTION CONTROL

SANITARY SURVEY (DEC 8–10)

- On-site inspections and document review
- No significant issues found
- Formal report expected in February

CROSS-CONNECTION CONTROL PROGRAM

- On-site inspections and document review
- Plan submitted July 1, 2025; under DDW review
- Key steps underway:
 - City ordinance updates by Aug 2026
 - Backflow prevention standard updates
 - Hazard assessments initiated
 - Planning Cross-Connection Control Specialist position



METROPOLITAN'S SHUTDOWN SCHEDULE FOR NEXT THREE YEARS

Dates	Facility	Purpose	Impacts to Member Agencies
Feb. 2 – 11, 2026	Upper Feeder (Treated)	Prepare San Gabriel Tower for future gate installation. Perform leak repair.	PM-06, PM-07, PM-08, PM-23
Mar. 9 – 17, 2026	Rialto Pipeline	Tie-in PM-21B bypass.	PM-21
Mar. 9 – 17, 2026	Glendora Tunnel	Support Rialto Pipeline shutdown	PM-26
Jan. 24 – Apr. 24, 2028	Rialto Pipeline	PCCP relining (Reach 1)	PM-21
Jan. 24 – Apr. 24, 2028	Glendora Tunnel	Support Rialto Pipeline shutdown	PM-26

WATER PROJECT UPDATES



NORTH GLENDORA RESERVOIR REPLACEMENT

PROJECT STATUS:

- Public notice for Mitigated Negative Declaration (MND) completed
- Environmental consultant updating MND to address mitigation

DESIGN & CONSTRUCTION:

- AKM Engineering finalizing design and bid documents
- Anticipated bid advertisement: April

NEXT STEPS:

- Present updated MND to City Council for approval
- Begin construction following bid award



WATER RESERVOIR ASSESSMENT & IMPROVEMENT PROJECT

PROJECT STATUS:

- Seven reservoirs: Sierra Madre, Goddard, Englewild, Morgan Ranch, Lower Gordon, Upper Gordon
- Improvements: safety upgrades, coatings, mixers, nitrate monitoring, site improvements
- Civiltec Engineering selected as lowest bidder (\$352,840)
- 30% design plans to support budget development

NEXT STEPS:

- Present to City Council for approval in early Feb 2026
- Begin design work for Engineering



COLORADO AVENUE WATER AND STREET IMPROVEMENT PROJECT

8 Streets

Glendora Ave. to Lemar Park
Route 66 to Mauna Loa Avenue

Water Main Improvements

8,500 Linear Feet 8" Pipe Replacement
Water Service Laterals & Fire Hydrant Assemblies

Street Improvements

Approximately 300,000 Sq. Ft. Pavement
Resurfacing & Rehabilitation, ADA compliant
curb ramps, New Signage & Striping

Completed in Two Phases

1. Plans Specifications & Estimates
Design Complete by Spring 2026
2. Construction in 2026

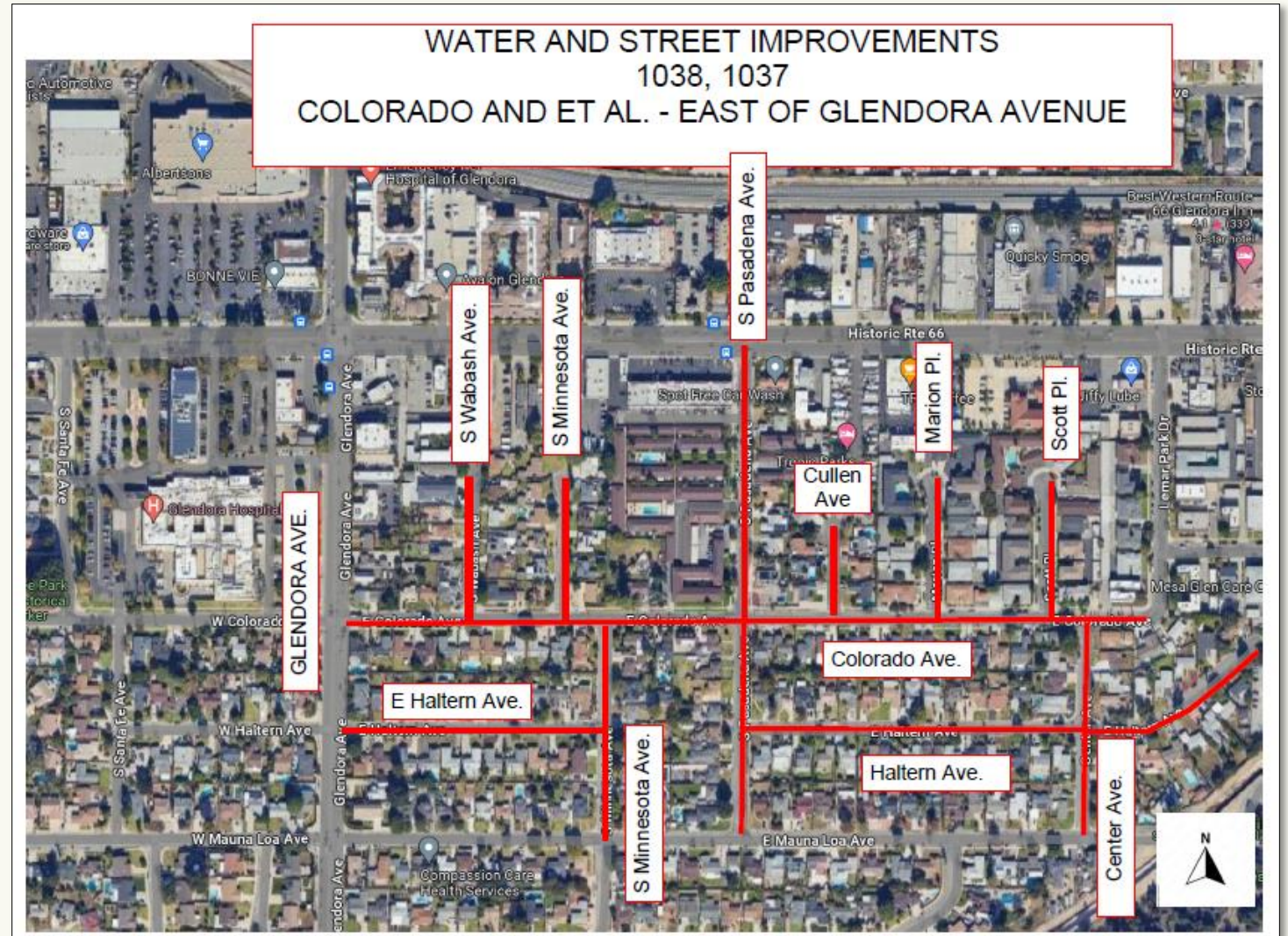
Fiscal Impact

Design at \$195,225

- Measure M & Water Capital Improvement Fund

Construction estimated at \$5.4 Million

- Water Capital Fund and Local Return.



CYPRESS AVENUE WATER AND STREET IMPROVEMENT PROJECT

Location

7 Streets, Leadora to Bennett (N-S) and Loraine to Elwood (E-W)

Water Main Improvements

8,300 Linear Feet 8" Pipe Replacement
Water Service Laterals & Fire Hydrant Assemblies

Street Improvements

Approximately 300,000 Sq. Ft. Pavement
Resurfacing & Rehabilitation; ADA compliant
curb ramps, New Signage & Striping

Completed in Two Phases

1. Plans Specifications & Estimates In Process.
Design Complete by April 2026
2. Construction in 2026

Fiscal Impact

Design at \$238,000

-Measure M & Water Capital Improvement
Fund

Construction estimated at \$5.4 Million

- Water Capital Fund and Local Return.



GLENDORA AVENUE WATER AND STREET IMPROVEMENT PROJECT

Location

Gladstone to Route 66

Water Main Improvements

1 Mile Water Line Replacement, Water Service Laterals and Fire Hydrant Assemblies

Street Improvements

Approximately 300,000 Sq. Ft. Pavement Resurfacing & Rehabilitation, ADA compliant curb ramps, New Signage, Striping and Traffic Signal Modifications.

Completed in Two Phases

1. Plans Specifications & Estimates In Process.
Design Complete by July 2026
2. Construction TBD Pending Funding

Fiscal Impact

Design at \$806,172

-Measure M & Water Capital Improvement Fund

Construction estimated at \$10- \$15 Million

- Water Capital Fund, Local Return and Staff is actively pursuing grant funds.



RECOMMENDATION

RECEIVE AND FILE THE WATER SYSTEM UPDATES.